

® THE  
*Open*  
GROUP

The  
*TOGAF*®  
Standard

# The TOGAF® Standard, 10th Edition and the TOGAF Certification Portfolio



The Open Group® and TOGAF® are registered trademarks of The Open Group.

# Agenda

1

The TOGAF  
Standard, 10<sup>th</sup>  
Edition

2

The Certification  
Portfolio

3

The Learning  
Paths

# The Open Group is ...

*900+ Memberships signed in 46 Countries  
Staff and local partners in 12 Countries*

Australia  
Austria  
Belgium  
Brazil  
Canada  
China  
Colombia  
Croatia  
Czech Republic  
Denmark  
Egypt  
Finland  
France  
Germany  
Hong Kong  
India  
Ireland  
Israel  
Italy  
Japan  
Kenya  
Luxembourg  
Malaysia



Mexico  
Netherlands  
New Zealand  
Nigeria  
Norway  
Peru  
Philippines  
Poland  
Portugal  
Romania  
Saudi Arabia  
Singapore  
Slovakia  
South Africa  
Spain  
Sweden  
Switzerland  
Taiwan  
Turkey  
United Arab Emirates  
Uruguay  
UK  
USA

# Forums of The Open Group

Open Group Se




**ArchiMate® Forum**

The TOGAF® Standard  
10<sup>th</sup> Edition



**Architecture Forum**



**Open Process Automation™ Forum**



**IT4IT™ Forum**

Dependability through Assuredness™


**Real-Time & Embedded Systems Forum**



**Open Trusted Technology Forum**



**Security Forum**



**Platform Forum**



**OSDU™ Forum**



**Open Footprint™ Forum**

**WORK GROUPS**  
Digital Portfolio, Service Oriented Architecture, Government EA, INITIATE and Commercial Aviation

# The Open Group Industry Verticals & Consortia

## Industry Verticals



Healthcare Forum



Exploration Mining Metals and Minerals Forum

## Consortia

(Gated US-only due to Export controls pertaining to the US DoD and their supplier base)



FACE™ Consortium



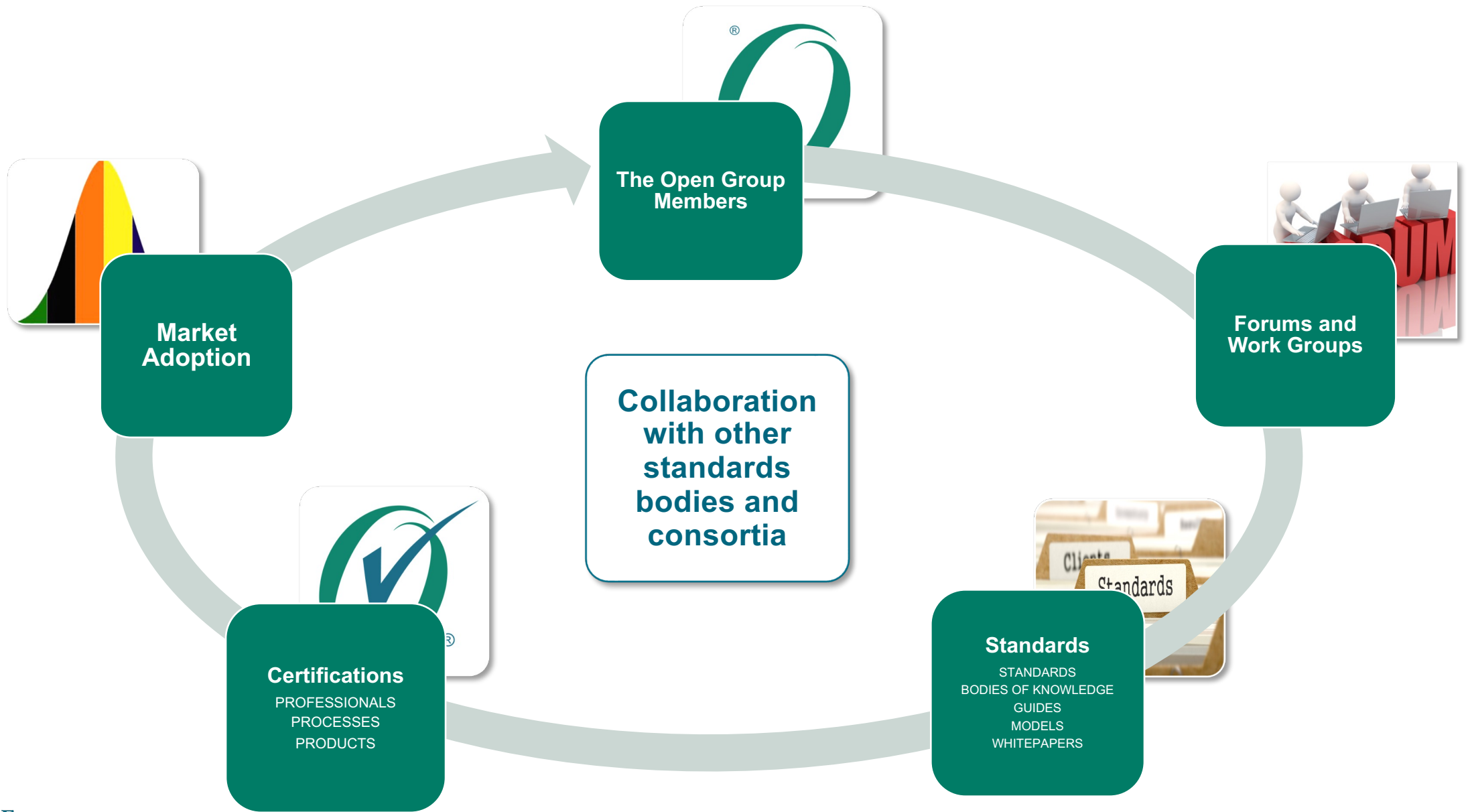
SOSA™ Consortium

6

# From Membership to Standards, and Standards to Certifications



- The Open Group Certifications are created based on the Standards produced by our members.
- The standards are rigorously produced and peer reviewed by acknowledged leaders in their fields, ensuring our certifications are based on industry accepted best practices and expertise.



# 1. The TOGAF® Standard, 10<sup>th</sup> Edition



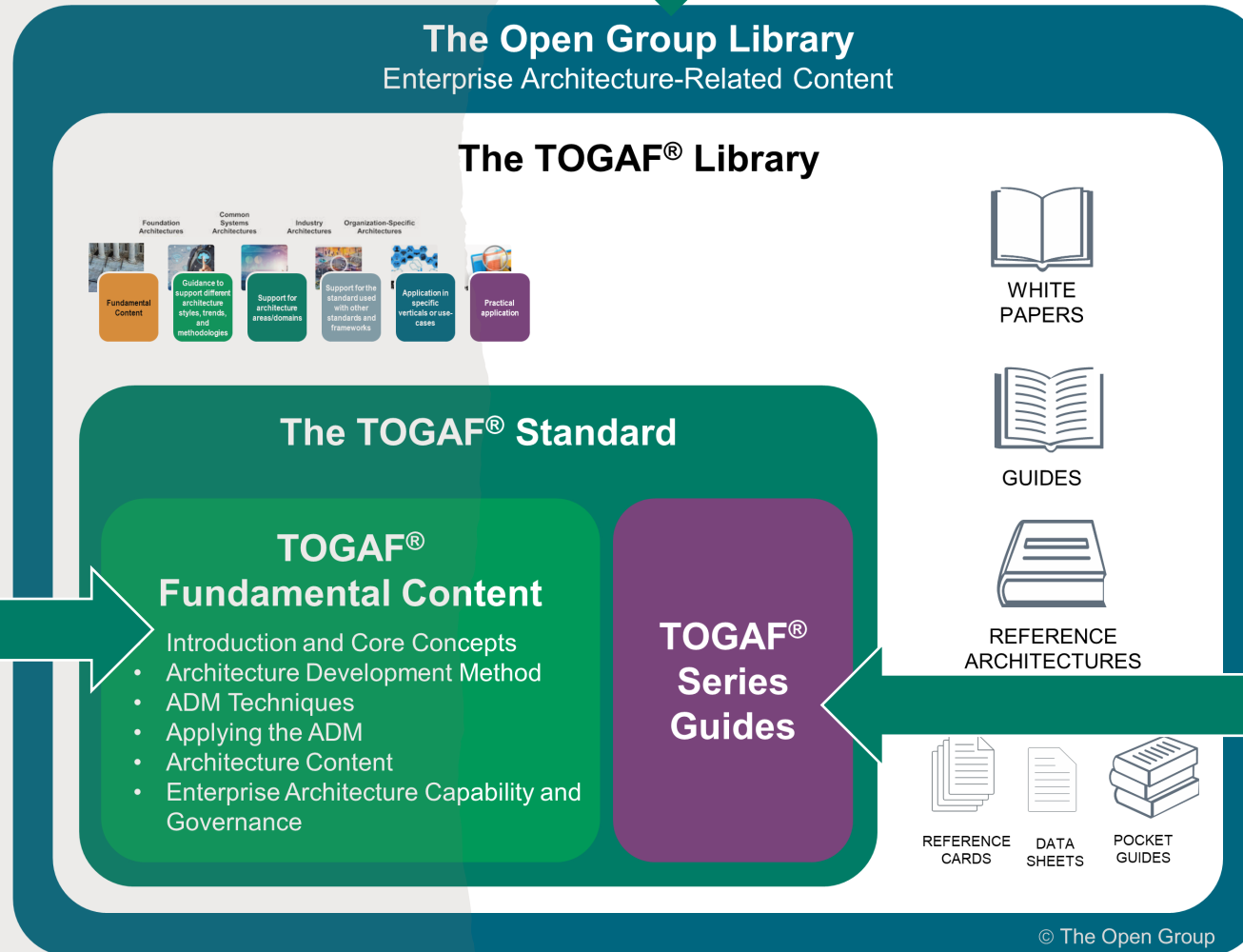
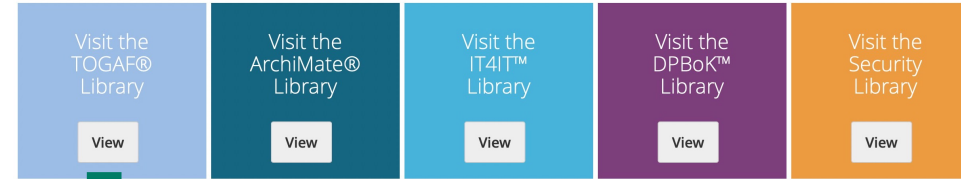
# Introducing the 10th Edition

**Updated Modular structure**  
**Extended Content**

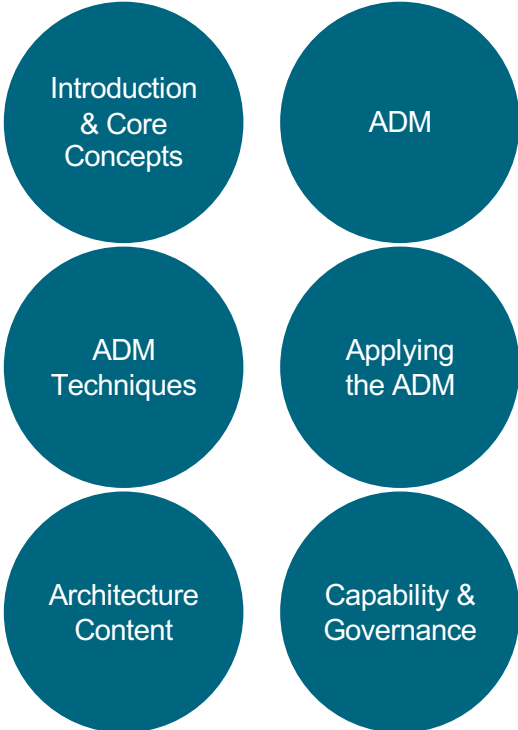
*Focused on what most practitioners want – more, better, and topical guidance on how to deliver the best Enterprise Architecture that supports their stakeholders and their organization*

# Modular Structure

The Open Group Library offers a wide range of publications including standards, guides, webinars, white papers, and more. You can browse by category, or search. In order to download publications from the Library you need an account for The Open Group website. If you have an existing account, [sign in](#). If you are a first time user, create an account [here](#).



# The TOGAF® Standard, 10<sup>th</sup> Edition (April 2022)





# Available Formats

The TOGAF® Standard

Search

Word Search | Search Index

Search..

TOGAF® Fundamental Content

- *Introduction and Core Concepts*
- *Architecture Development Method (ADM)*
- *ADM Techniques*
- *Applying the ADM*
- *Architecture Content*
- *Enterprise Architecture Capability and Governance*

Extended Guidance



## Welcome to the Digital Edition of the TOGAF Standard

This standard contains two types of content designed to assist the Enterprise Architect:

1. TOGAF Fundamental Content
2. Extended Guidance

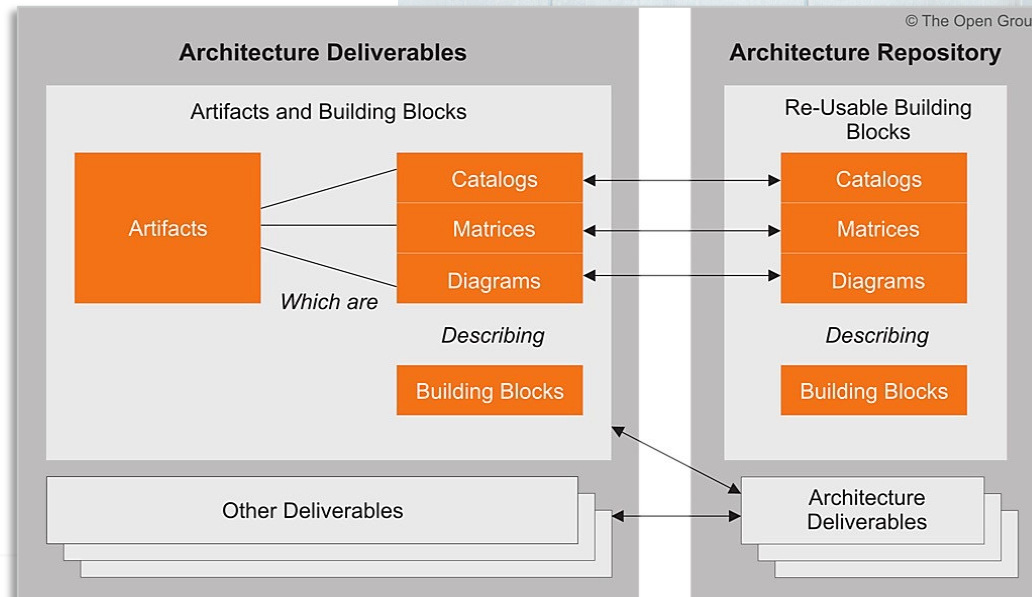
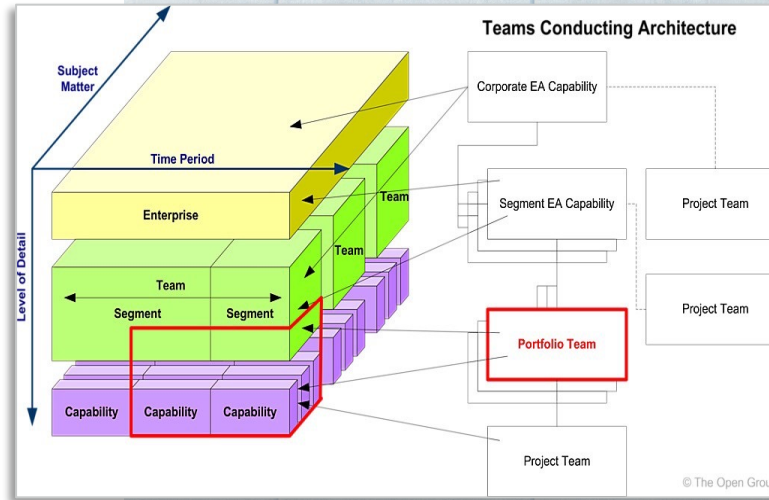
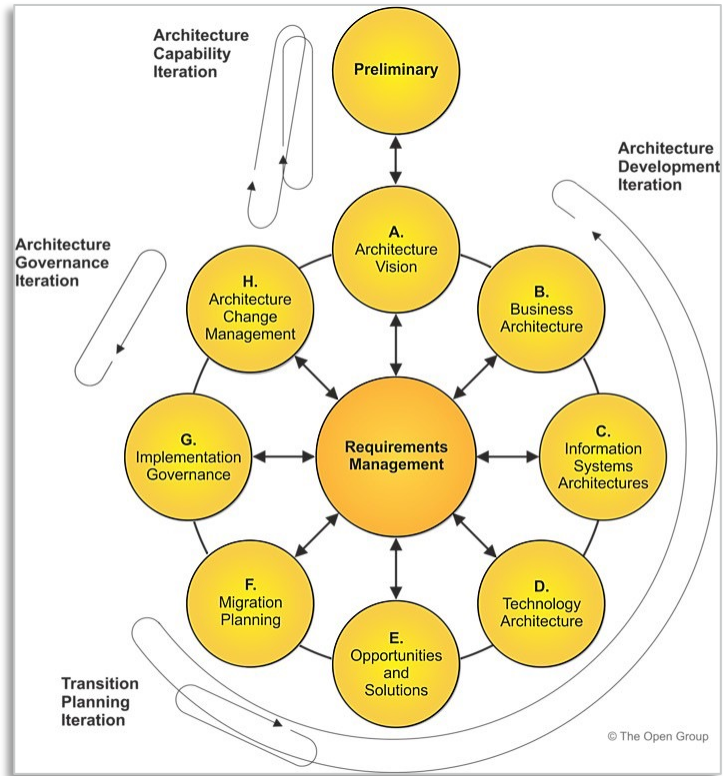
The role of the **TOGAF Fundamental Content** is to provide essential “scaffolding” and established best practices that are stable and enduring. The concepts in the TOGAF Fundamental Content are considered to be the universal concepts applicable to the TOGAF framework.

The role of the **Extended Guidance** in the form of the TOGAF Series Guides is to build upon the general content provided in the TOGAF Fundamental Content by providing guidance for specific topics. Over time the extended guidance will expand as the professional body of knowledge that forms the TOGAF Standard expands with more stable best practice.

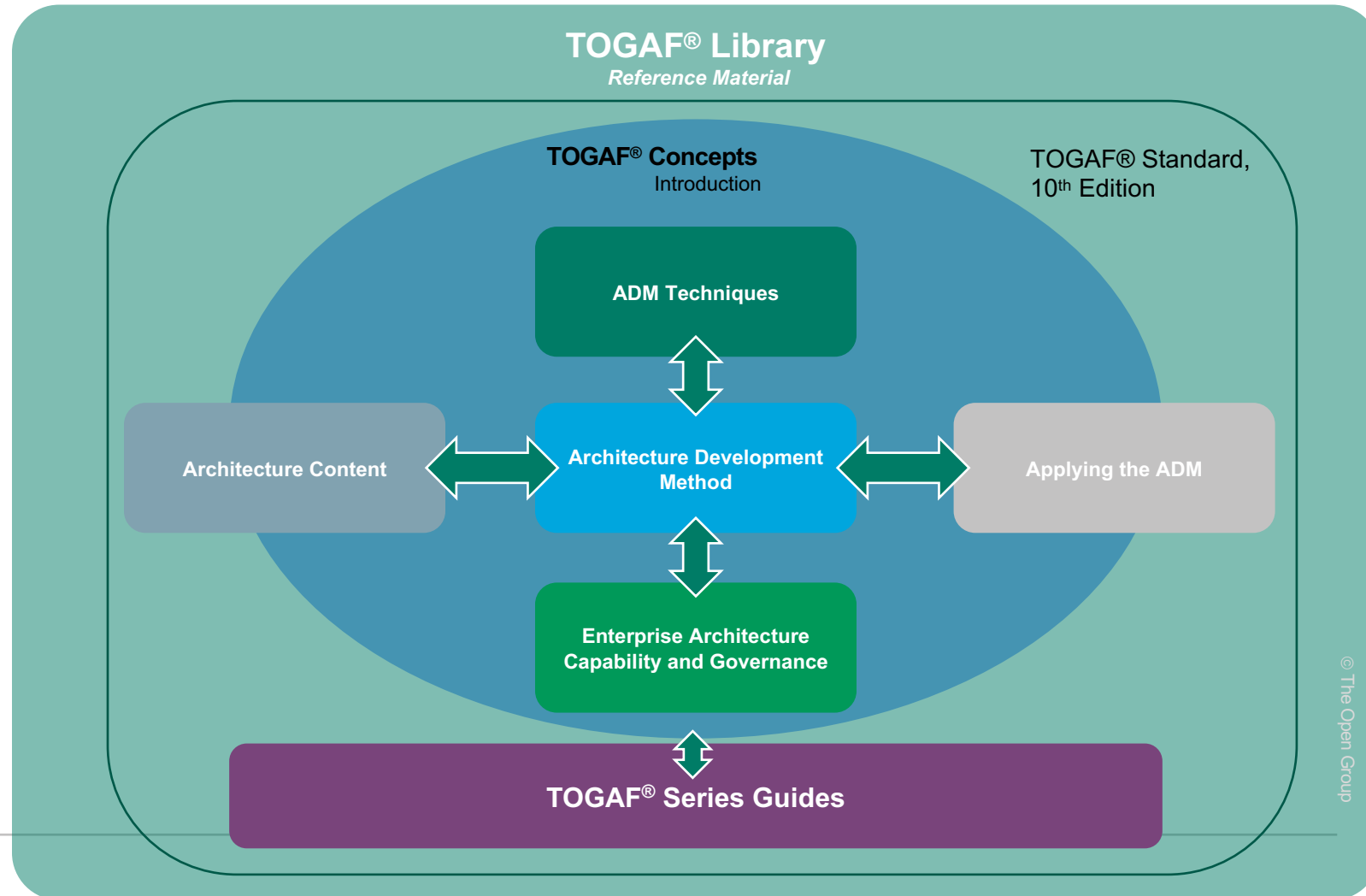
### About the Digital Edition



# Continuity



# The TOGAF® Fundamental Content



# TOGAF® Series Guides



***The TOGAF® Series Guides provide advice on how to configure and, at times, extend the TOGAF Fundamental Content to suit a given context.***

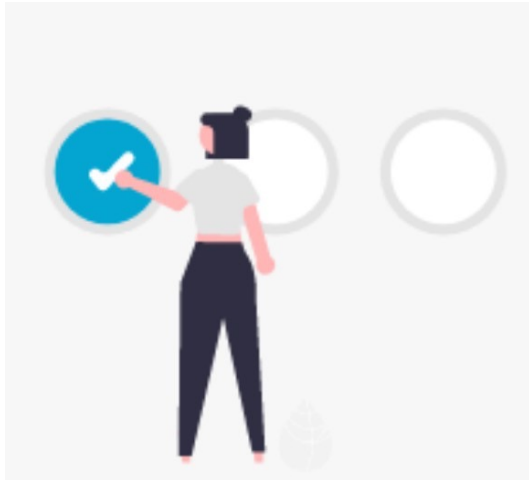
# Extended Guidance – TOGAF® Series Guides



General •  
How  
To

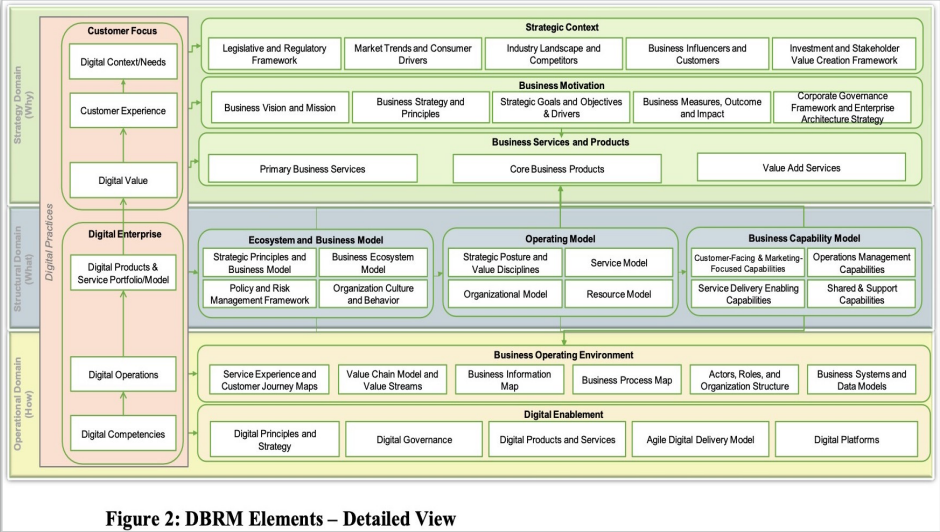
- A Practitioners' Approach to Developing Enterprise Architecture Following the TOGAF® ADM
- Digital Technology Adoption: A Guide to Readiness Assessment and Roadmap Development
- Using the TOGAF® Standard in the Digital Enterprise

Domain  
Specifics



- Business Architecture (6) Business Models, Business Capabilities, Value Streams, Information Mapping, Organization Mapping
- Security Architecture (1) Integrating Risk and Security within a TOGAF® Enterprise Architecture
- Data & Information Architecture (1) Customer Master Data Management
- Agile Methods (2) Enabling Enterprise Agility, Applying the TOGAF® ADM using Agile Sprints

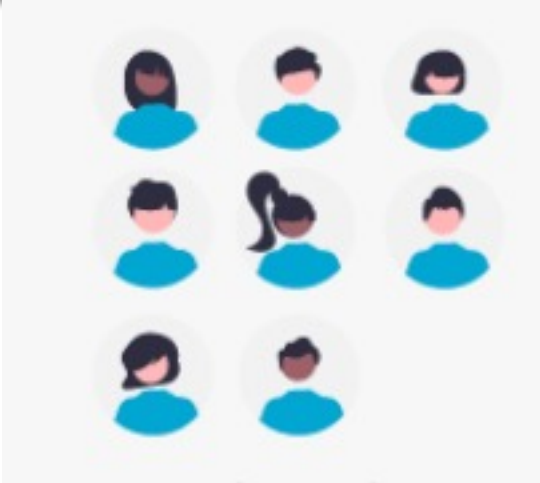
# Extended Guidance – TOGAF® Series Guides



## Reference Models & Methods

- Digital Business Reference Model
- Government Reference Model
- Architecture Maturity Models
- Architecture Project Management
- Architecture Skills Framework
- Microservices Architecture

## Establishing and Evolving an EA Team



- The TOGAF® Leader’s Guide to Establishing and Evolving an EA Capability

for specific topics, concerns, and use-cases

# Getting Started

- See the White Paper: An Introduction to the TOGAF® Standard, 10<sup>th</sup> Edition
  - <http://www.opengroup.org/library/w212>
- Explains the motivation for and substance of the revisions and new additions to the standard
- Includes recommendations on how to start using the standard
- Gives detailed release notes for the changes to the Fundamental Content

THE *Open* GROUP

## An Introduction to the TOGAF® Standard, 10<sup>th</sup> Edition

*A White Paper by:*

Dave Hornford, Conexiam

Nathan Hornford, Conexiam

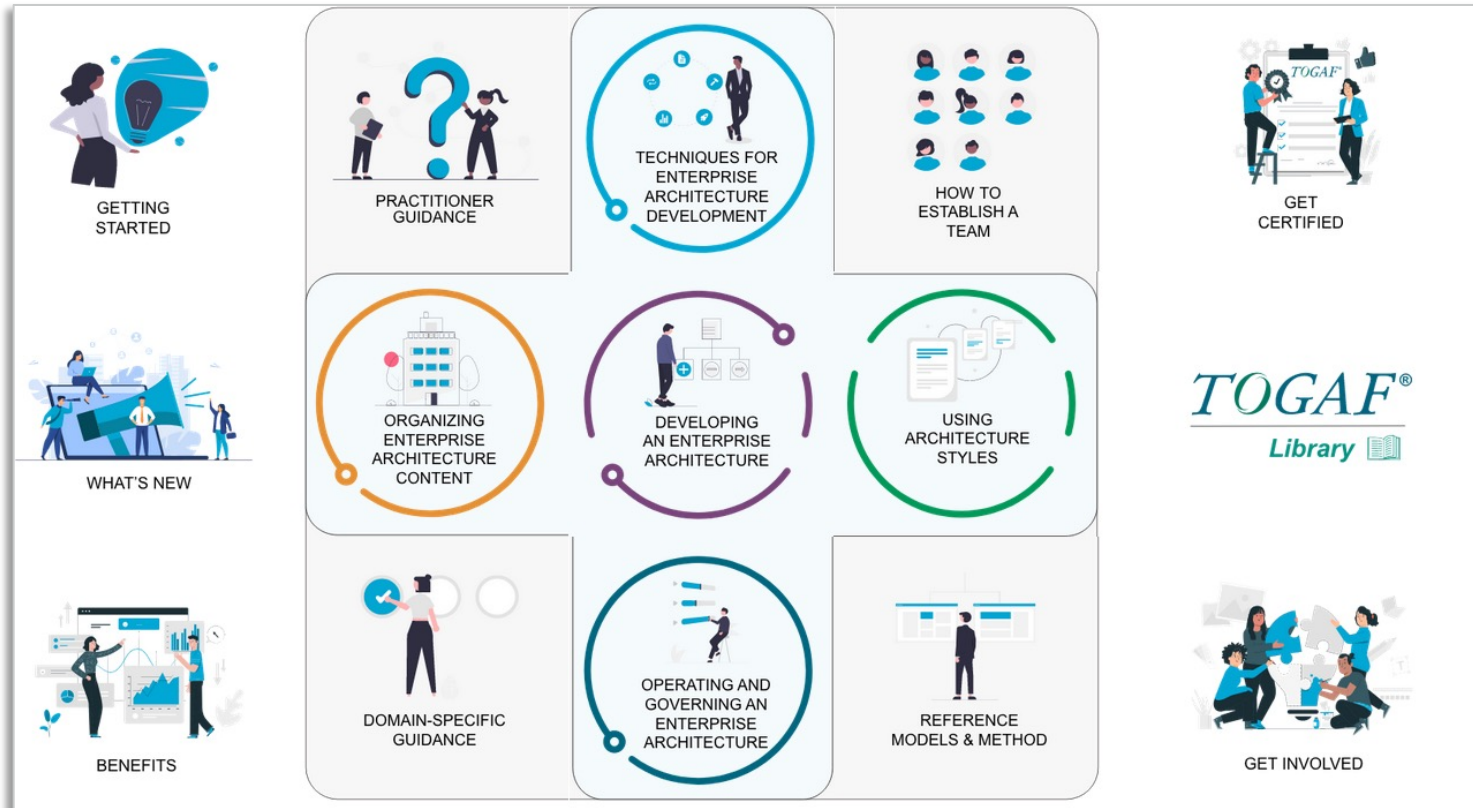
Mike Lambert, Fellow of The Open Group

Ken Street, Conexiam

April 2022

THE  
*Open*  
GROUP

# Digital Edition




**TOGAF**<sup>®</sup>  
Library

The Online Edition of the Standard


Makes it easier to navigate and search the expanded content

Evolving continuously as we expand and refresh the contents of the standard



# Digital Edition






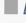
 The TOGAF® Standard

---

Search  
 Word Search | Search Index

---



TOGAF® Fundamental Content  




-  [Introduction and Core Concepts](#)
-  [Architecture Development Method \(ADM\)](#)
-  [ADM Techniques](#)
-  [Applying the ADM](#)
-  [Architecture Content](#)
-  [Enterprise Architecture Capability and Governance](#)


---

Extended Guidance

---

General How-To  

-  [A Practitioners' Approach to Developing Enterprise Architecture Following the TOGAF® ADM](#)
-  [Using the TOGAF® Standard in the Digital Enterprise](#)
-  [Digital Technology Adoption: A Guide to Readiness](#)



## Welcome to the Digital Edition of the TOGAF Standard

This standard contains two types of content designed to assist the Enterprise Architect:

1. TOGAF Fundamental Content
2. Extended Guidance

The role of the **TOGAF Fundamental Content** is to provide essential “scaffolding” and established best practices that are stable and enduring. The concepts in the TOGAF Fundamental Content are considered to be the universal concepts applicable to the TOGAF framework.

The role of the **Extended Guidance** in the form of the TOGAF Series Guides is to build upon the general content provided in the TOGAF Fundamental Content by providing guidance for specific topics. Over time the extended guidance will expand as the professional body of knowledge that forms the TOGAF Standard expands with more stable best practice.

### About the Digital Edition

This digital edition of the TOGAF Standard will evolve continuously as we refresh and expand the contents of the standard.

### How to Get Started?

Start reading the introduction part of the TOGAF Fundamental Content below, read the White Paper: [An Introduction to the TOGAF® Standard, 10th Edition](#), select a specific document on the left navigation panel, or search the standard.

### PDF Downloads

You can download the standard in pdf format from [The Open Group Library](#) (registration required).

### How to Provide Feedback?

You can report a bug or provide feedback on a page by clicking the images shown below.

# Provide feedback via the Digital Edition

The screenshot displays the digital edition of the TOGAF Standard. On the left is a navigation sidebar with a home icon, the text 'The TOGAF® Standard', and a list of menu items: 'Table of Contents', 'Preface', 'Part 1: Introduction', '1 Introduction', '1.1 Overview', and '1.2 How to Use this Guide'. A red circle highlights a feedback icon in the sidebar. The main content area shows the title 'A Practitioners' Approach to Developing Enterprise Architecture Following the TOGAF® ADM' and the publisher 'The Open Group'. Below this, the navigation path '1 Introduction' and '1.1 Overview' is shown, with a green arrow pointing from the '1.1 Overview' link to a 'Submit Feedback' form. The form contains the following fields and text:

**Submit Feedback**

This form is available to submit feedback on an online publication

Publication *	URL *	DocNo
TOGAF Standard, 10th Edition	<a href="https://pubs.opengroup.org/togaf-standard/adm-practitioners/index.html">https://pubs.opengroup.org/togaf-standard/adm-practitioners/index.html</a>	C220

**Name \***

First:  Last:

*Please insert your name*

**Email \***

*Please insert your email address*

**Organization \***

*Please insert your organization (typically company/organization name)*

Please insert section number/name (use 0 if global).

**Classification \***

Objection  Comment  Editorial

**Section Number \***

*Enter the section number/name, e.g. 4.15 Architecture Landscape*

**Problem \***

# 2. The Certification Portfolio



# The TOGAF® Certification Portfolio

It includes certifications and certification credentials built upon both

- The TOGAF Standard, Version 9.2
- The TOGAF Standard, 10<sup>th</sup> Edition





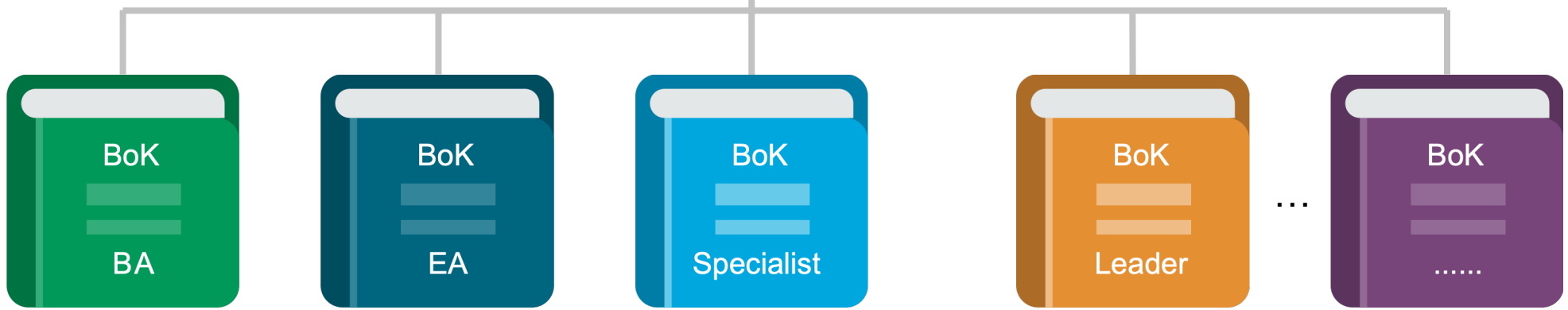
One Standard



Multiple Bodies of Knowledge

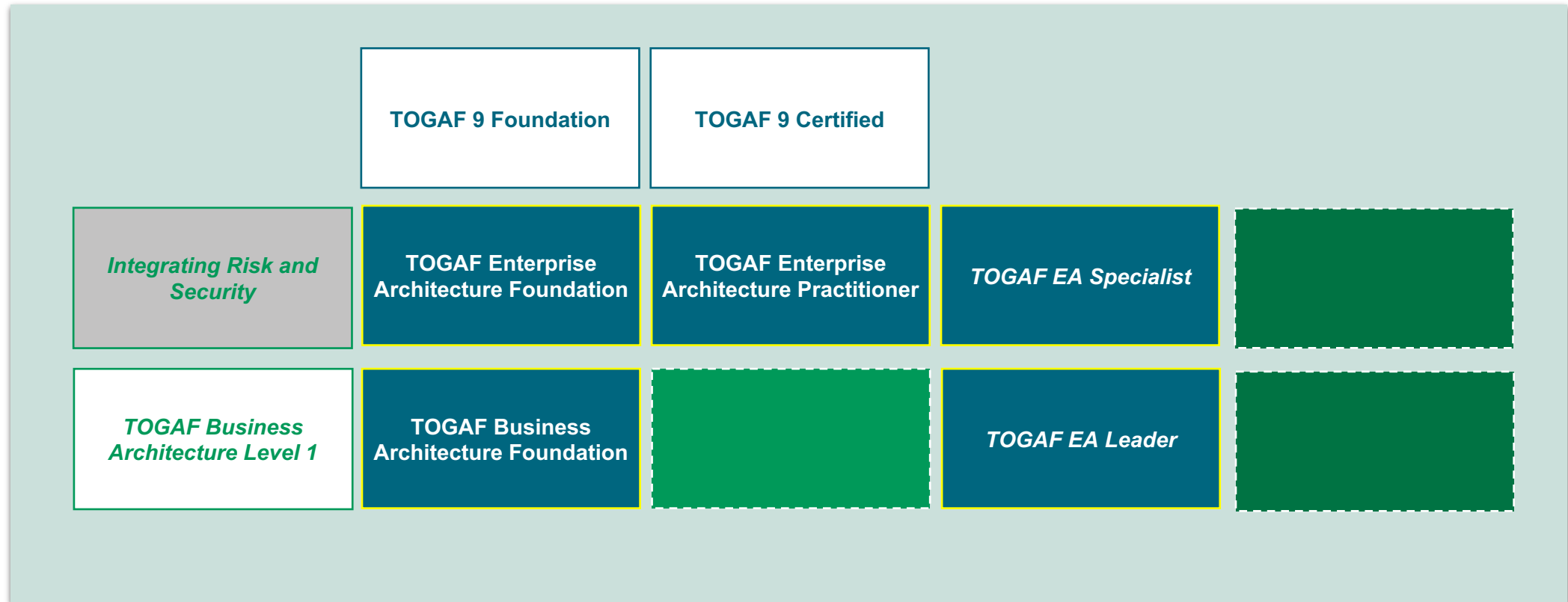


Multiple Certifications





# The TOGAF® Certification Portfolio



TOGAF Standard,  
Version 9.2

TOGAF Standard,  
10th Edition

Both

# 3. The Learning Paths



# The TOGAF® Standard — Version 9.2

# The TOGAF® Standard — 10th Edition

TOGAF 9 Part 1 Exam

TOGAF 9 Combined Part 1 and Part 2 Exam

TOGAF Enterprise Architecture Part 1 Exam

TOGAF Enterprise Architecture Combined Part 1 and Part 2 Exam

TOGAF Business Architecture Foundation Exam

The Open Group  
**Open**  
Certified

TOGAF® 9 Foundation

TOGAF 9 Part 2 Exam

The Open Group  
**Open**  
Certified

TOGAF® 9 Certified

The Open Group  
**Open**  
Certified

TOGAF® Enterprise Architecture Foundation

TOGAF Enterprise Architecture Part 2 Exam

The Open Group  
**Open**  
Certified

TOGAF® Enterprise Architecture Practitioner

The Open Group  
**Open**  
Certified

TOGAF® Business Architecture Foundation

TOGAF Enterprise Architecture Bridge Exam

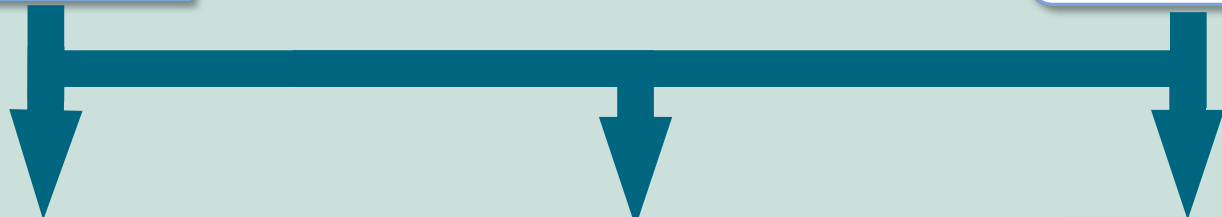
# The TOGAF® Standard — Version 9.2

TOGAF 9  
Part 1 Exam



# The TOGAF® Standard — 10th Edition

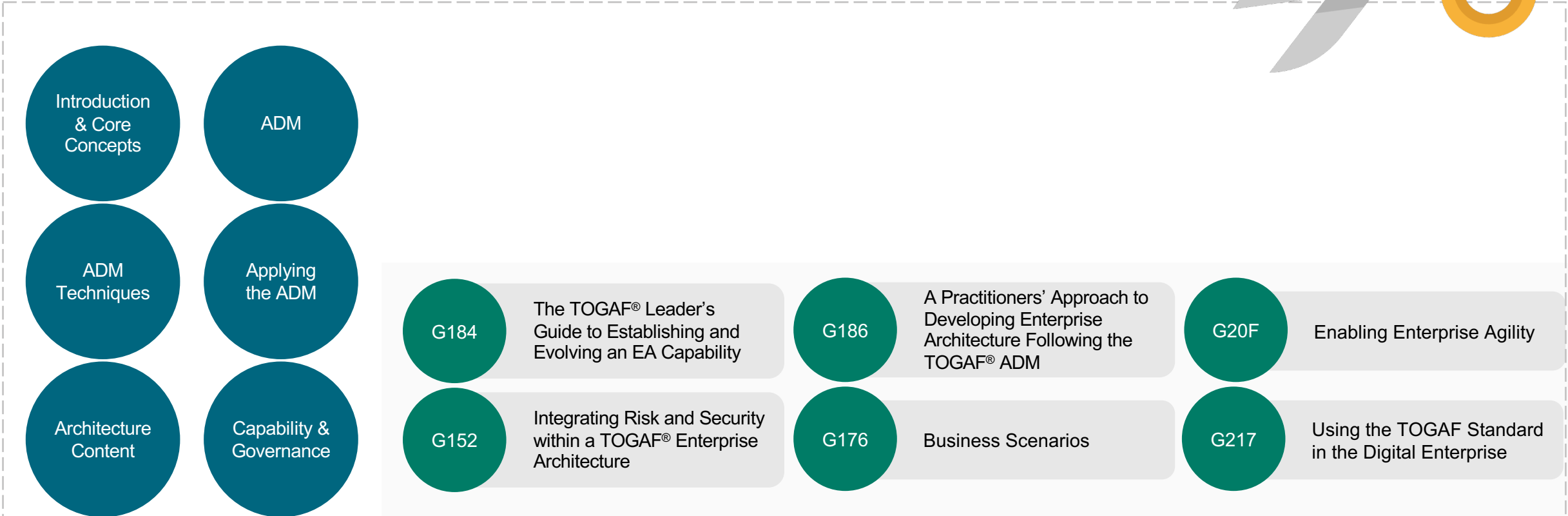
TOGAF  
Enterprise  
Architecture  
Part 1 Exam



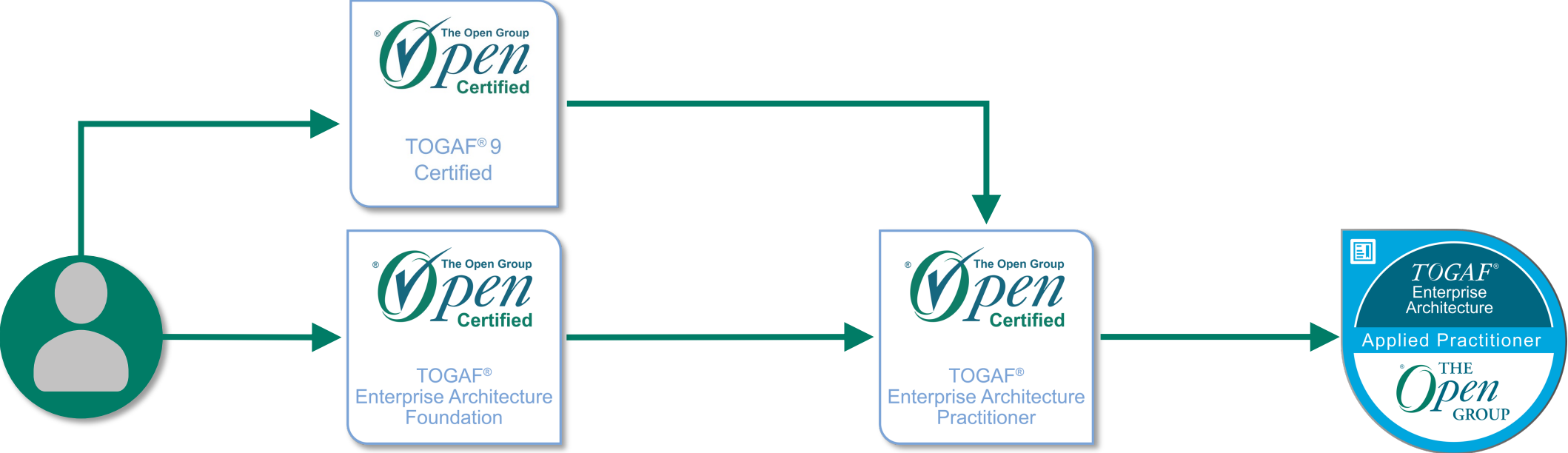
# TOGAF® Certifications



# Body of Knowledge: TOGAF® Enterprise Architecture



# TOGAF® Enterprise Architecture Practitioner



# TOGAF® Enterprise Architecture Foundation

The foundation of the learning path for developing and maintaining an Enterprise Architecture.

The fundamental concepts.

A common language for Enterprise Architecture.



# Target Audience

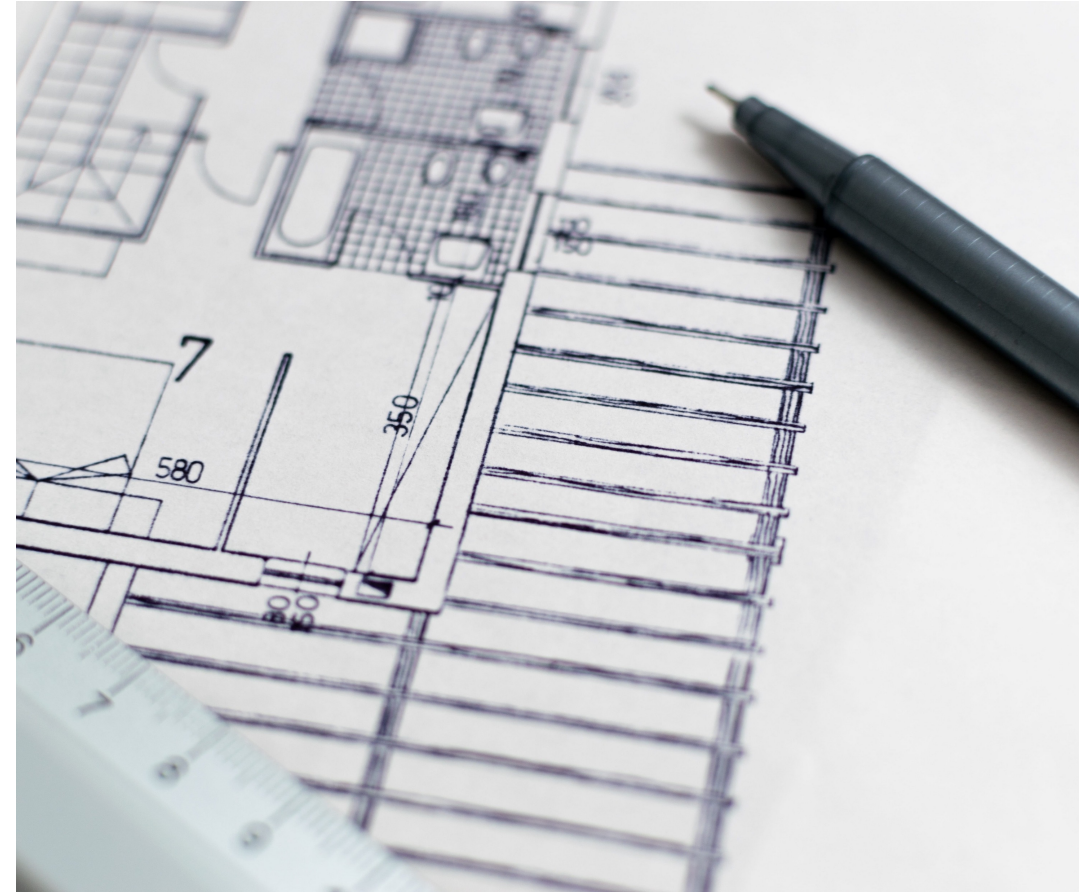
Individuals who need a basic understanding of a proven Enterprise Architecture methodology.

Individuals who work for or join an organization applying the TOGAF® Standard.



# TOGAF® Enterprise Architecture Practitioner

Validation of knowledge, comprehension, including the ability to **analyze and apply** the TOGAF Standard to developing, sustaining, and using an Enterprise Architecture.



# Target Audience



Individuals expected to apply the TOGAF® approach to develop, sustain, and transform domain architectures.

Individuals actively contributing to organizational transformation.

Individuals working in Agile environments who need to understand and apply Enterprise Architecture.

# TOGAF® Enterprise Architecture Bridge

For individuals who are **TOGAF 9 Certified**, who wish to update their qualifications as part of their professional development and demonstrate their ability to apply Enterprise Architecture.

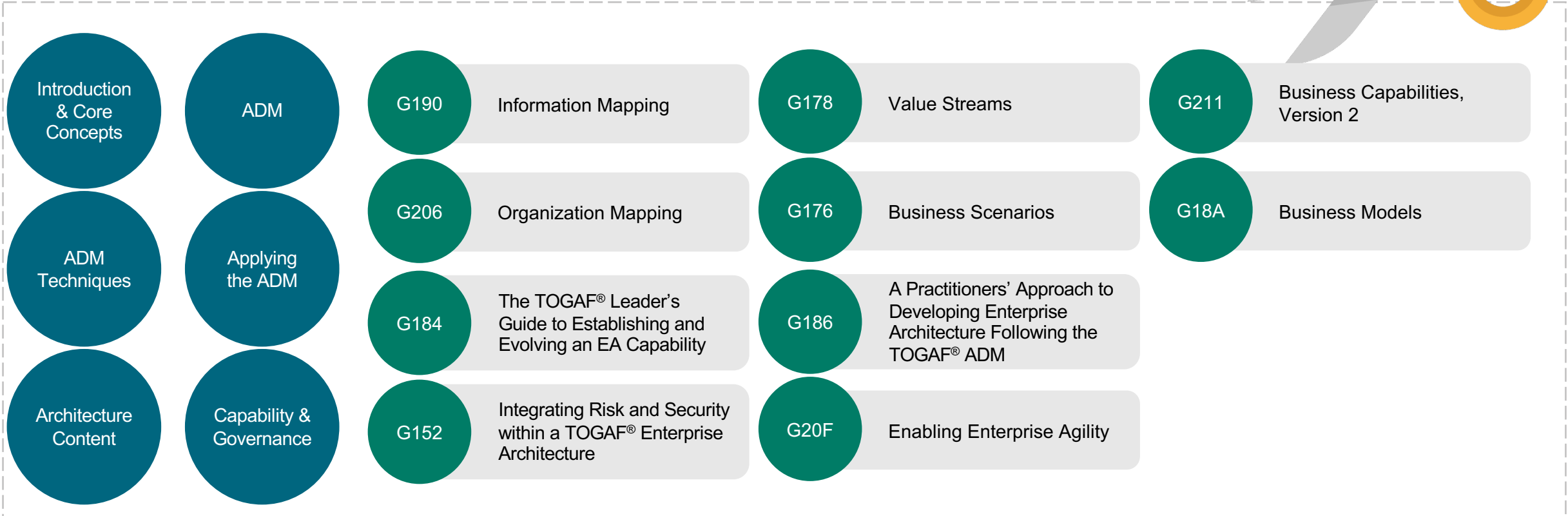
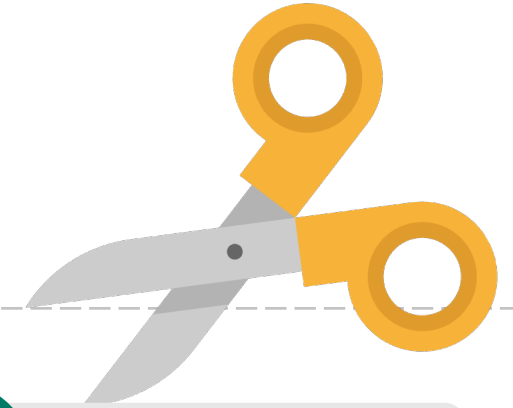


# Applied Practitioner Badge

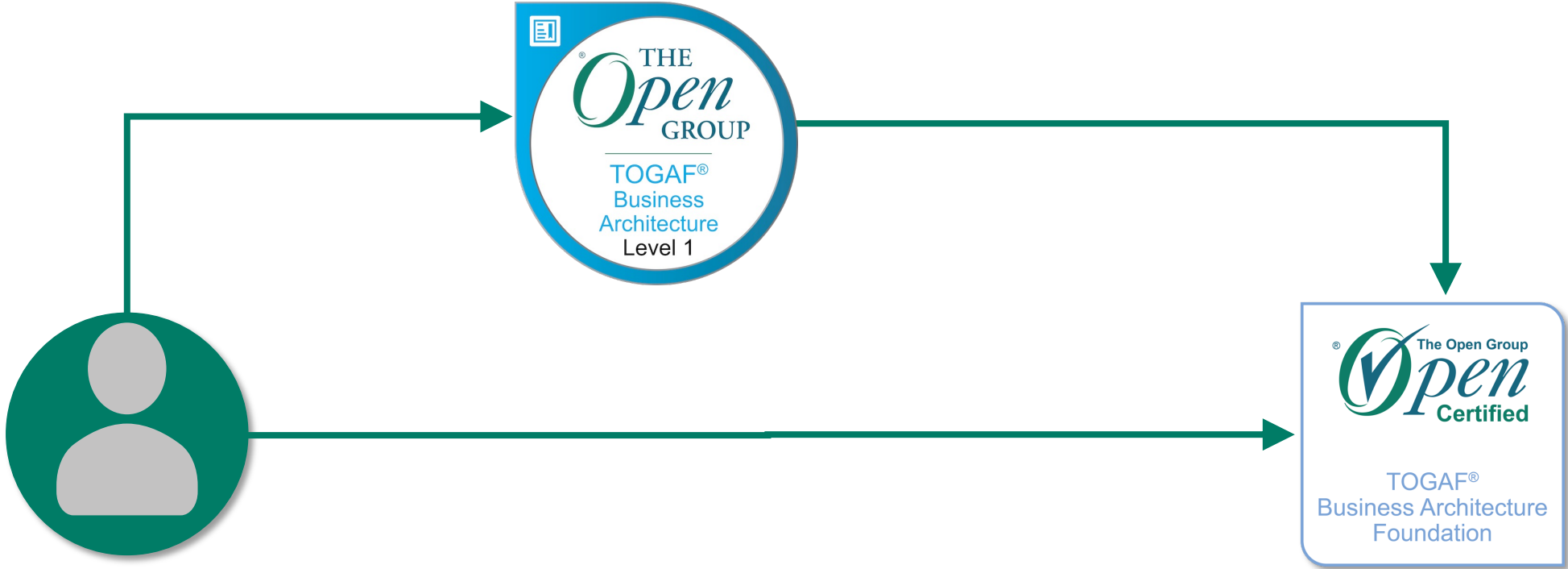
Individuals who are TOGAF® Enterprise Architecture Practitioner certified and who have satisfactorily completed the TOGAF Enterprise Architecture Practitioner Learning Studies with an Accredited Training Course Provider are eligible for the Applied Practitioner badge.



# Body of Knowledge: TOGAF® Business Architecture



# TOGAF® Business Architecture Foundation



# TOGAF® Business Architecture Foundation

The foundation of the learning path for Business Architecture.

The fundamental concepts.

A basic understanding of Business Architecture using the TOGAF approach.



# Target Audience

Individuals, such as those responsible for business planning, who wish to apply the TOGAF® Business Architecture approach.

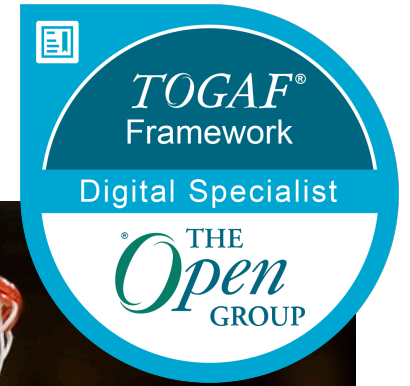
Individuals needing to gain competencies in TOGAF Business Architecture techniques.



# TOGAF® Framework: Digital Specialist

- How to use the TOGAF® Standard in the Digital Enterprise
- Guidance on Digital Technology Adoption including a transformation readiness assessment technique

Prerequisite: TOGAF Foundation or above



# Benefits



Understanding how Enterprise Architecture can support the Digital Enterprise

Knowledge of techniques and best practices for Digital Technology Adoption

# TOGAF® Framework: Agile Specialist

- How to adapt the TOGAF® Standard to support an Agile Enterprise
- How to apply the TOGAF ADM using Agile Sprints

Prerequisite: TOGAF Foundation or above



# Benefits



Understanding agility and why its important

Understanding how Enterprise Architecture can be developed in an Agile way

Knowledge of techniques for Agile Product Management

Understanding how Sprints can be used with the TOGAF® ADM

# TOGAF® Enterprise Architecture: Leader

How to establish an Enterprise Architecture Capability based on best practices.

Prerequisite: TOGAF Foundation or above



# Benefits



Understanding of key concepts for the EA Leader

Understanding how an EA Capability is realized

Understanding how the purpose and objectives of the EA Capability directly shape the EA organization mode, governance framework, architecture contents, and process model

The process of governance, roles, and responsibilities

# Summary

1

The TOGAF  
Standard, 10<sup>th</sup>  
Edition

2

The Certification  
Portfolio

3

Learning Paths

® THE  
*Open*  
GROUP

The  
*TOGAF*®  
Standard

**Thank you**